

Macintosh OS X PPPoE Configuration For High Speed Users

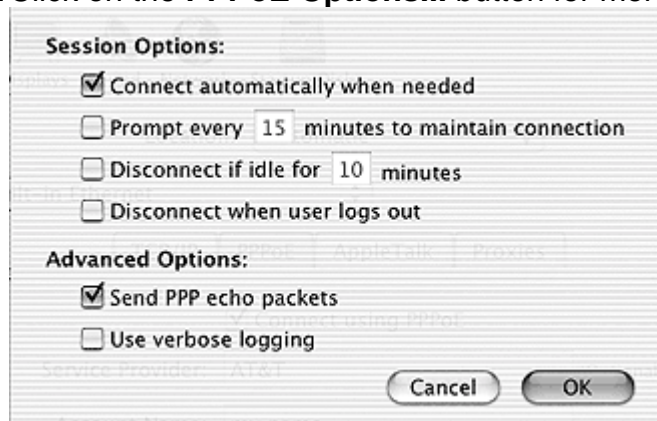
1. Click the Apple in the upper left, and then select **System Preferences** from the drop-down menu.



2. Click the **Network** icon.
3. From the **Show** drop-down menu, select your ethernet device.
4. Click the **PPPoE** tab.
5. Select the **Connect using PPPoE** option.
6. In the **Service Provider** field, enter **HuronTel**.
7. Leave the **PPPoE Service Name** field blank.
8. In the **Account Name** field, if you are a ADSL Customer, type your username@hurontel.on.ca

If you are a Wireless High Speed or DSL Customer located in Ripley, Dungannon or Goderich, just type your username (without the @hurontel.on.ca).

9. In the **Password** field, enter your HuronTel password.
10. Select the **Save Password** option.
11. Click on the **PPPoE Options...** button for more options.



Note: Setting the field **Disconnect if idle for x minutes** is not needed. There are no ramifications/extra charges for leaving the connection active, and most customers prefer to have their DSL always on. It is probably best to leave this selection disabled.

12. Click the **OK** button.
13. Click the **Save** button to finish.
14. Open your web browser-you should be connected automatically. If you experience problems, please call 1-877-395-3800.